

Secure Data Matrix Labels

Part numbers to be confirmed

- Polyethylene terephthalate (PET) substrate
- Pre-assigned 14x14 Data Matrix code
- 16 digit number printed (optional)
- Embedded nonClonableID 'fingerprint'
- 10 mm diameter
- Tamper evident
- Adhesive pre-applied (rear)

Applications

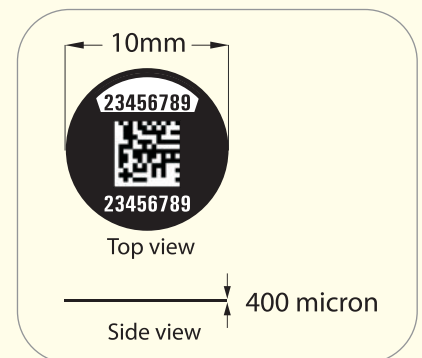
- Engineering, fashion, pharma, food & beverage products
- Packaging materials and seals
- Documents and financial instrument
- Tickets and vouchers
- Can be applied to a base label

Supply

- Pre-loaded onto database
- Minimum order 10,000 labels
- Provided on a reel

Uses

- Supply chain tracking / inventory management using a standard 2D Barcode scanner
- Brand security using handheld nonClonableID Touch reader for authentication
- Remote inspection
- Point of Sale (POS) validation
- Manufacturing data integration
- Warranty / guarantee management



Bilcare
Research